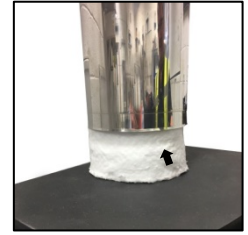


Instruction Guide

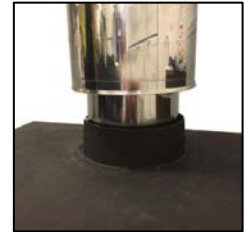
ICID Double Wall Adjustable Starter Section

INITIAL INSTALLATION

1. Remove loose strip of insulation and keep to one side.



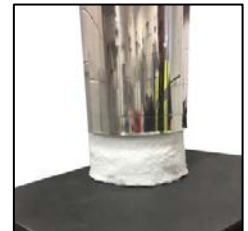
2. Insert male spigot of liner into the appliance spigot.



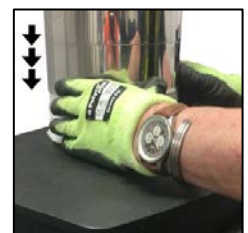
3. Seal using the rope gasket, fire cement or similar.



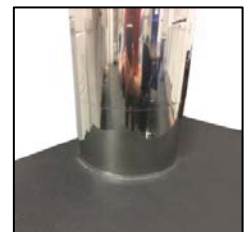
4. Insulate liner using strip of insulation with joint to rear.
Width of insulation strip can be trimmed to suit.



5. Slide adjustable case down over the insulation to cover the appliance spigot.



Please see reverse side of this guide for instructions to allow removal of stove for servicing and re-installation of stove.

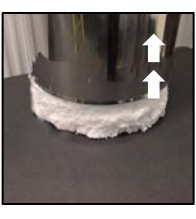
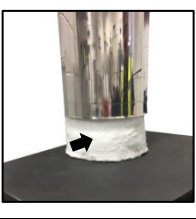


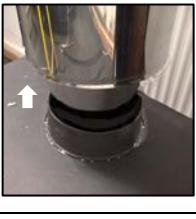
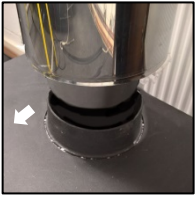






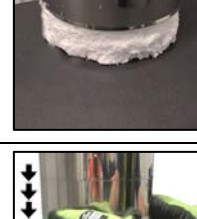
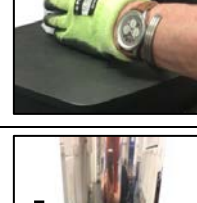
Instruction Guide

ICID Double Wall Adjustable Starter Section

INSTRUCTION TO ALLOW REMOVAL OF STOVE FOR SERVICING

RE-INSTALLATION OF STOVE

<p>1. Slide adjustable case up inside the outer wall of the chimney.</p>	
<p>2. Remove two loose insulation strips and keep to one side.</p>	
<p>3. Loosen the locking band on the liner using the quick release clip (retain the locking band to one side).</p>	
<p>4. Break the fire cement seal between the appliance spigot and chimney liner.</p>	
<p>5. Slide the liner spigot up inside the chimney until clear of appliance spigot.</p>	
<p>6. Remove appliance.</p>	

<p>1. Position stove spigot immediately beneath liner spigot of chimney.</p>	
<p>2. Slide locking band into place around the joint on the liner, but do not tighten.</p>	
<p>3. Slide liner spigot down inside the appliance spigot and seal using the fire cement or similar.</p>	
<p>4. Now tighten the bolt on the locking band around the joint of the liner.</p>	
<p>5. Position narrower strip of insulation around the locking band with joint to the rear.</p>	
<p>6. Slide adjustable cover down 5mm past insulation. Position final insulation around spigot with joint to the rear.</p>	
<p>7. Slide adjustable case down over the insulation to cover the appliance spigot.</p>	